

CATALOG

2023 WOODEN HOUSES





Vigil Export Import Trading Ltd is excited to present our collection of wooden houses made of glued laminated timber, produced using advanced technology and equipment from renowned global brands. The wooden houses created by our company are environmentally friendly, distinguished by extraordinary architectural solutions and exclusive reliability.

Our company offers the supply of complete sets of wooden houses, including windows, doors and roof truss system, according to standard and individual projects.

We invite all interested parties to long-term and mutually beneficial cooperation. Our company is also open to new construction projects both in Turkey and in any safe country in the world, based on the principles of mutual respect and trust of partners, responsibility and professionalism, effective management and mutual commercial interest.

Houses made of glued laminated timber are the choice of successful people who value their living space. Keep up with the times!

Yours sincerely,

*Mr. Arshad Abdulhamid
Director*

Vigil Export Import Trading Ltd

Vigil Export Import Trading Ltd offers the following standard projects:

- 106 m² – Aston
- 126 m² – Capri
- 127 m² – Capella
- 142 m² – Toscana
- 144 m² – Elegia
- 161 m² – Leonardo
- 169 m² – Donatella
- 172 m² – Santorini
- 204 m² – Olimpia
- 215 m² – Victoria
- 221 m² – Renaissance
- 245 m² – Paradise
- 263 m² – Cassandra
- 303 m² – Versailles
- 366 m² – Eco Palace

Vigil Export Import Trading Ltd invites to cooperate:

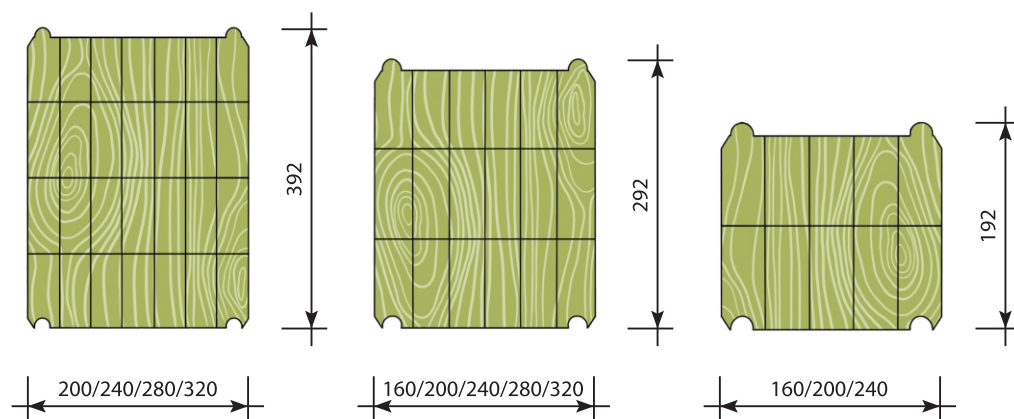
- Construction companies
- Architectural bureaus



Glued laminated timber is a high-tech structural material made of wood. It is made of several layers of finger-jointed wooden fragments (lamellas) which are first stacked in packages of the required thickness, and then glued together under pressure. After profiling, it becomes a stable wooden beam with improved performance characteristics.

The most important advantage of glued laminated timber in comparison with solid wood is the ability to obtain a building material with predictable properties in strength and visual quality, due to the optimization of lumber for external defects.

Our company offers the customer a choice of glued laminated timber of the following sizes.



Advantages of high-quality glued laminated timber:

- Excellent thermal insulation properties.
- High ecological safety, as only high-quality adhesive compositions are used in the production of glued timber.
- Preservation of the geometric shape of the structure for many years and almost complete absence of shrinkage (high-quality material retains its shape throughout the entire period of operation).
- Increased fire resistance (achieved through treatment with special materials).
- Seismic resistance and strength allow glued laminated timber to be used for the construction of wooden houses worldwide.

In our wooden houses, the customer can choose the grade of glued laminated timber: the first or the highest grade.



First grade glued laminated timber
Contain only healthy knots.



Highest grade glued laminated timber
Does not contain knots on the outer finger-jointed lamellas.





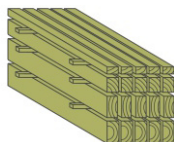
PRODUCTION TECHNOLOGY OF GLUED LAMINATED TIMBER

SORTING, SAWING



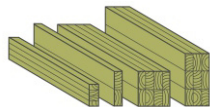
The process of manufacturing a wooden house begins even before it reaches the factory. Forestry specialists carefully select pine logs with the appropriate characteristics suitable for manufacturing purposes. These logs are then delivered to the factory and proceed to the first stage of producing glued laminated timber, which involves sawing the logs.

DRYING



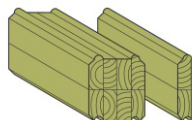
The board is placed inside special drying chambers, where it undergoes a 14-day process of drying, with constant monitoring by an operator, to bring the moisture content of the board to $12 \pm 2\%$.

GLUING



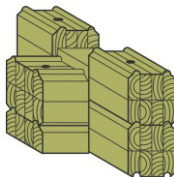
Gluing is one of the most important stages in the production of glued laminated timber, requiring not only high-quality raw materials, but also control of temperature and humidity in the premises. The use of 12-meter presses for load-bearing structures with a pressure of up to 18 kg/cm^2 allows the production of high-quality wooden houses.

PROFILING



The patented profile of glued laminated timber allows for the construction of wooden houses without the use of insulation between logs, thanks to the unique profile feature and equipment precision. Powerful modern equipment can profile glued timber with a cross-section up to $300 \times 400 \text{ mm}$.

CUTTING OF CORNER JOINTS

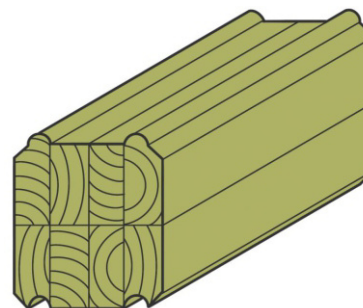


Manually positioning of the logs, high-quality milling cutters and specially designed equipment make it possible to perform joints of any complexity and any angle with high precision.

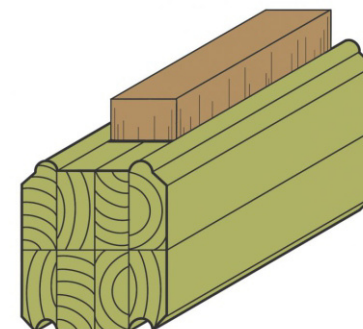
In the end, after conducting quality control checks, our glued laminated timber is a completely ready-to-assemble element of your future wooden house.

INSULATED GLUED TIMBER

Glued Timber



Insulated Glued Timber



Thanks to the efforts of our partners' engineers, a fundamentally new type of glued timber has been developed for building wooden houses. This type of log combines the thermal technology of a frame house with the aesthetics of a solid glued timber. The innovation lies in the fact that there are special cavities inside the log that can be filled with insulation such as foam or other types of foam insulators. Due to the advanced technology, it is practically impossible to distinguish externally between a construction made of hollow logs and one made of solid glued timber, unlike construction according to the block-house technology.

The presence of cavities allows for:

1. Significantly simplifying the installation of all utilities in the house (electricity, water supply, drainage, etc.).
2. Reducing the weight of the structure, which positively affects the installation time and complexity.
3. By using special foam insulation, it is possible to increase the thermal resistance coefficient several times, which makes it possible to save on heating costs.



GLUED BEAMS

Glued wooden beams are used for making floors – a structural part of a building that separates it into different floors. They have a moisture content of 10-12% across the entire cross-section. They have a stable geometric shape and do not transform or crack, unlike solid wooden beams. This material has a higher strength and load-bearing capacity coefficient than solid wooden beams.

Glued wooden beams are not limited in size, which allows for spanning large gaps and structures. The advantage of this material over steel or reinforced concrete beams is its low thermal conductivity and small specific weight.

They are the most reliable material for rafters as the supporting structure of a pitched roof. Rafter plates serve as the lower support for the rafters and are intended for load distribution in the floors. Glued wooden beams are also used as support pillars and other load-bearing elements.

Glued wooden beams simplify the installation of structures, thus finding wide application in the construction of complex roofs (ice rinks, shopping centers, waterparks).

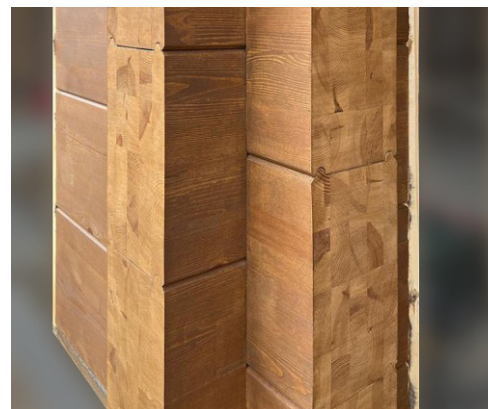


TYPES OF JOINTS

Depending on the customer's preferences, it is possible to manufacture glued laminated timber with the following types of corner and joining connections:

"Cup" joint:

This is a classic joint of logs at the intersections of the walls of the wooden house (external, internal, and internal with external walls), as well as at the joints of logs along the length of the wall.

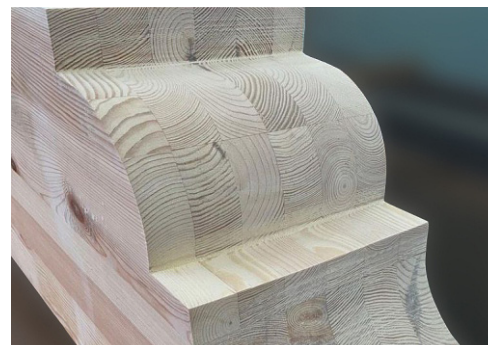


"Butterfly" joint:

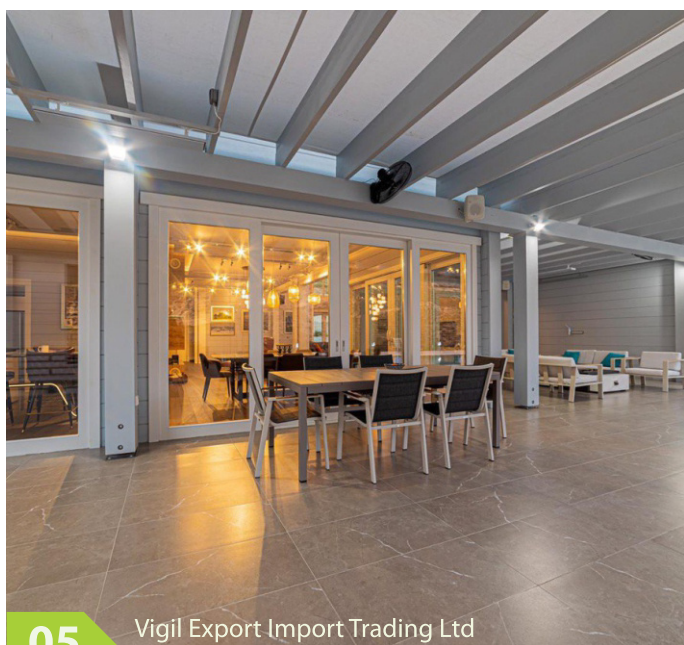
This type of joint involves locking the logs together by inserting a wooden butterfly-shaped wedge into a pre-prepared factory-made socket. Such a joint is airtight, reliable, and durable, as well as aesthetically pleasing, since the corner joint is done without extending the end of the log beyond the surface of the wall.



GLUED MILLED TIMBER



As per customer's preferences, it is possible to manufacture decorative elements from glued milled timber, which is a regular glued timber processed on a special miller machine. Such equipment allows for cutting various patterns, ornaments, moldings, and other decorative elements that can be used in interior or exterior finishing of your wooden house.



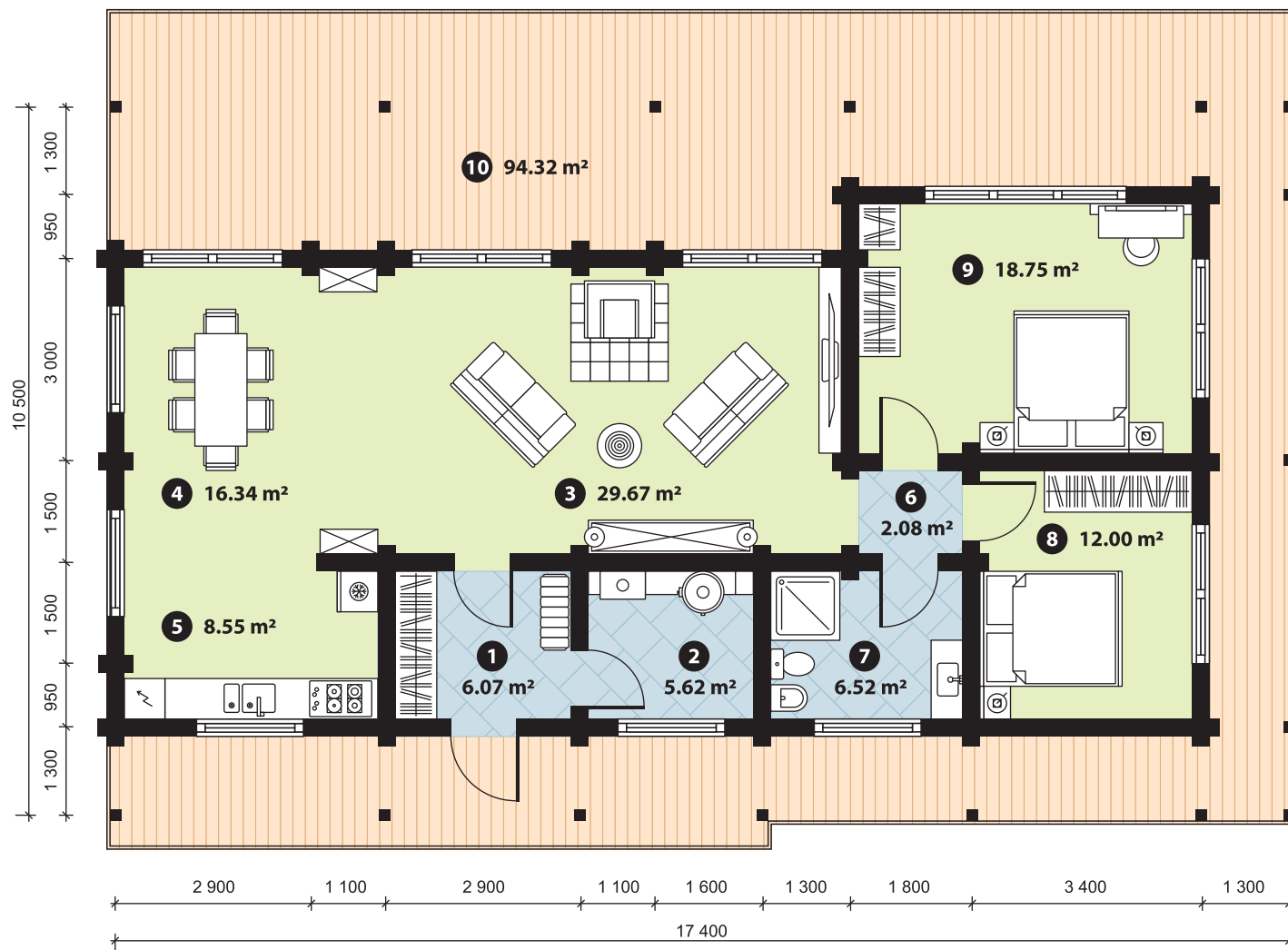
Aston 106 m² + 94 m² outdoor spaces



Aston 106 m² + 94 m² outdoor spaces



Aston 106 m² + 94 m² outdoor spaces



First floor plan		
No.	Zone name	Area, m ²
1	Entrance hall	6.07
2	Boiler room	5.62
3	Living room	29.67
4	Dining room	16.34
5	Kitchen	8.55
6	Corridor	2.08
7	Bathroom	6.52
8	Bedroom	12.00
9	Bedroom	18.75
10	Terrace	94.32
Total area		199.90
Living area within the heated contour		105.60

Capri 126 m² + 50 m² outdoor spaces



Capri 126 m² + 50 m² outdoor spaces



Capri 126 m² + 50 m² outdoor spaces



First floor plan		
No.	Zone name	Area, m ²
1	Entrance hall	7.83
2	Hall	15.35
3	Boiler room	6.67
4	Bedroom	12.76
5	Bathroom	5.52
6	Bedroom	8.82
7	Bedroom	16.11
8	Bathroom	5.06
9	Walk-in closet	6.43
10	Living room	29.64
11	Kitchen	11.66
12	Porch	3.15
13	Terrace	47.21
Total area		176.21
Living area within the heated contour		125.85

Capri 126 m² + 50 m² outdoor spaces



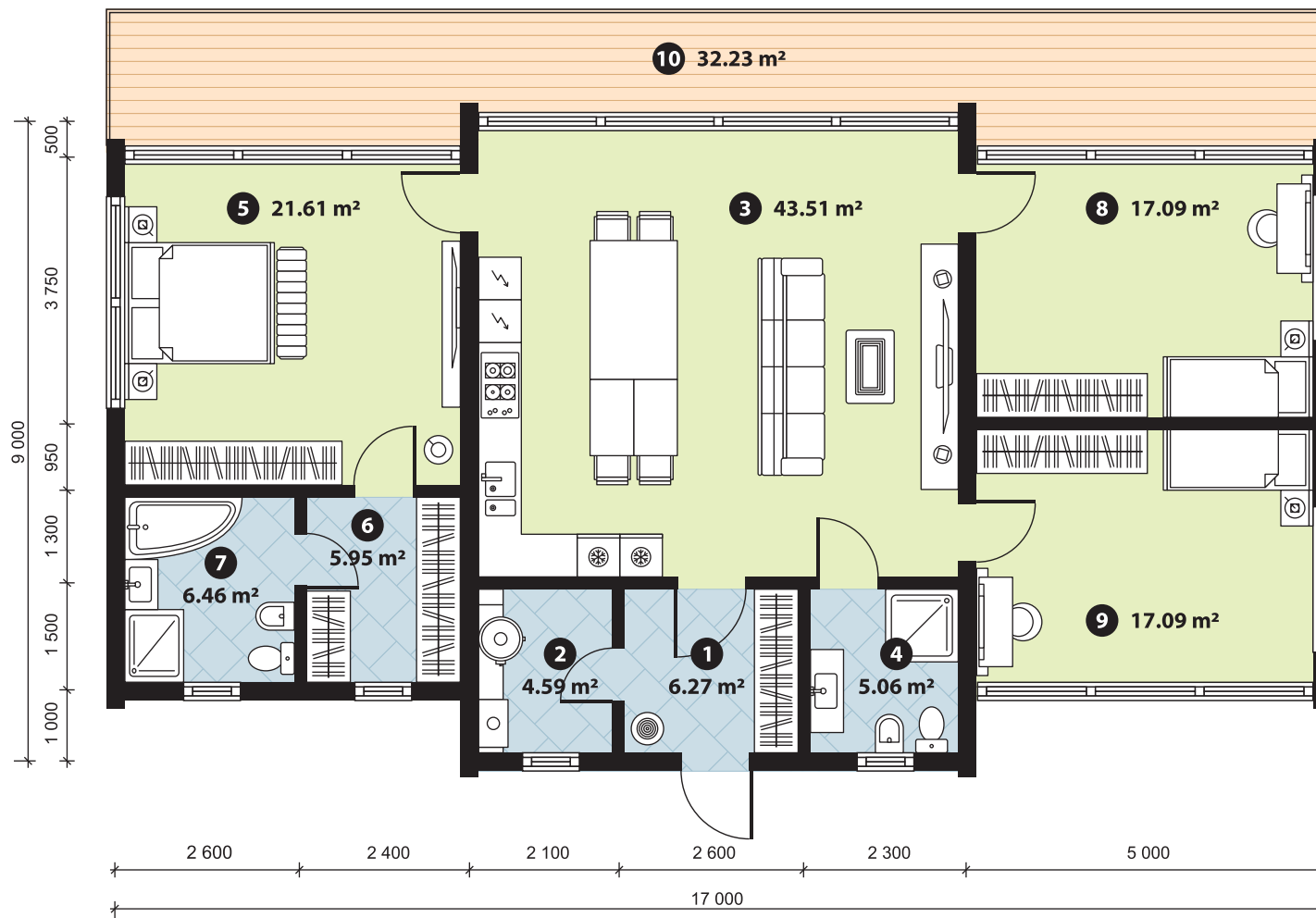
Capella 127 m² + 32 m² outdoor spaces



Capella 127 m² + 32 m² outdoor spaces

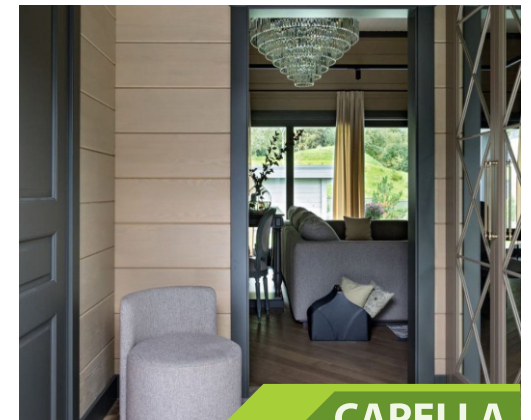
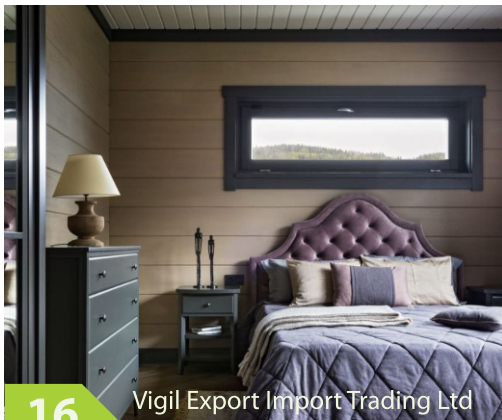


Capella 127 m² + 32 m² outdoor spaces



First floor plan		
No.	Zone name	Area, m ²
1	Entrance hall	6.27
2	Boiler room	4.59
3	Living and dining room	43.51
4	Bathroom	5.06
5	Bedroom	21.61
6	Walk-in closet	5.95
7	Bathroom	6.46
8	Bedroom	17.09
9	Bedroom	17.09
10	Terrace	32.23
Total area		159.86
Living area within the heated contour		127.63

Capella 127 m² + 32 m² outdoor spaces



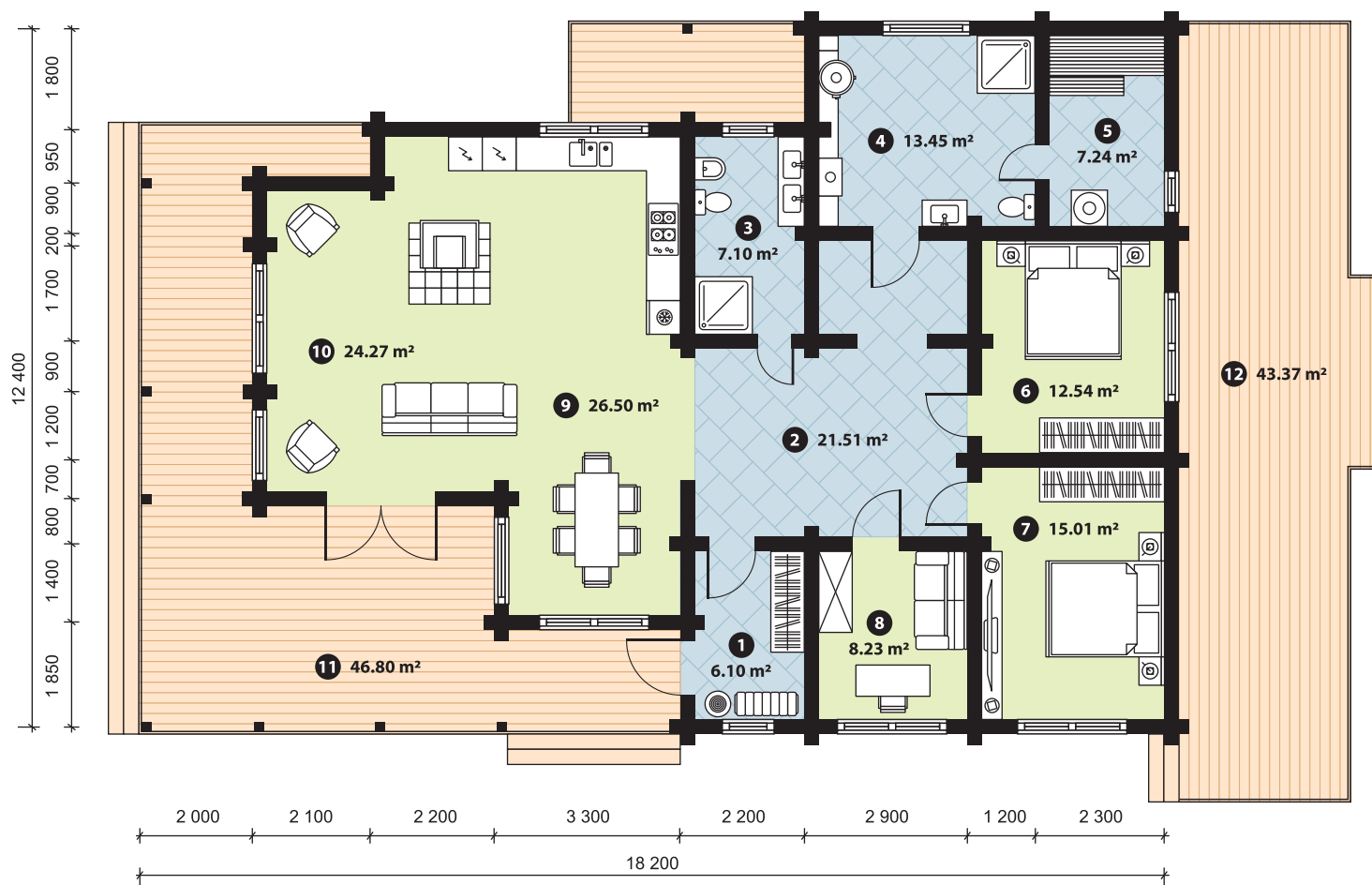
Toscana 142 m² + 90 m² outdoor spaces



Toscana 142 m² + 90 m² outdoor spaces



Toscana 142 m² + 90 m² outdoor spaces



First floor plan		
No.	Zone name	Area, m ²
1	Entrance hall	6.10
2	Hall	21.51
3	Bathroom	7.10
4	Shower room	13.45
5	Sauna	7.24
6	Bedroom	12.54
7	Bedroom	15.01
8	Home office	8.23
9	Kitchen and dining room	26.50
10	Living room	24.27
11	Terrace	46.80
12	Terrace	43.37
Total area		232.12
Living area within the heated contour		141.95

Toscana 142 m² + 90 m² outdoor spaces



Elegia 144 m² + 50 m² outdoor spaces



Elegia 144 m² + 50 m² outdoor spaces

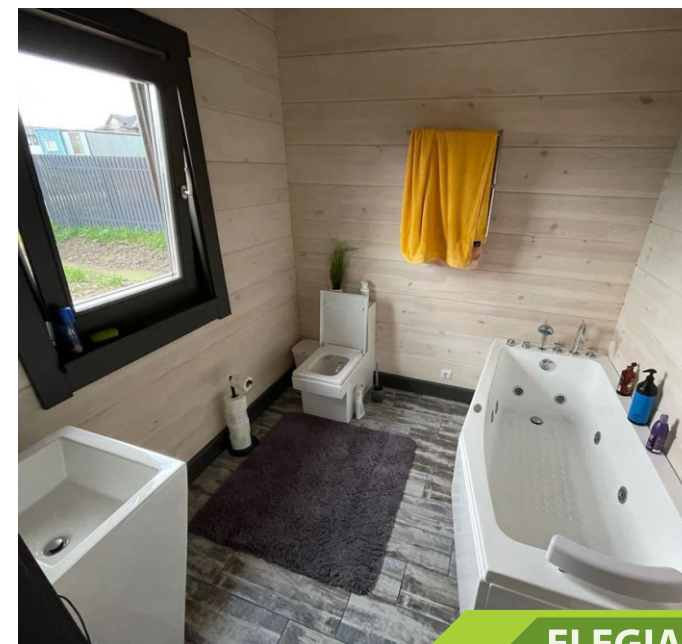


Elegia 144 m² + 50 m² outdoor spaces



First floor plan		
No.	Zone name	Area, m ²
1	Entrance hall	10.21
2	Boiler room	5.89
3	Living and dining room	47.48
4	Bedroom	16.40
5	Corridor	3.78
6	Bathroom	6.46
7	Walk-in closet	13.63
8	Bedroom	16.40
9	Corridor	3.78
10	Bathroom	6.46
11	Bedroom	13.63
12	Porch	10.14
13	Terrace	40.24
Total area		194.50
Living area within the heated contour		144.12

Elegia 144 m² + 50 m² outdoor spaces



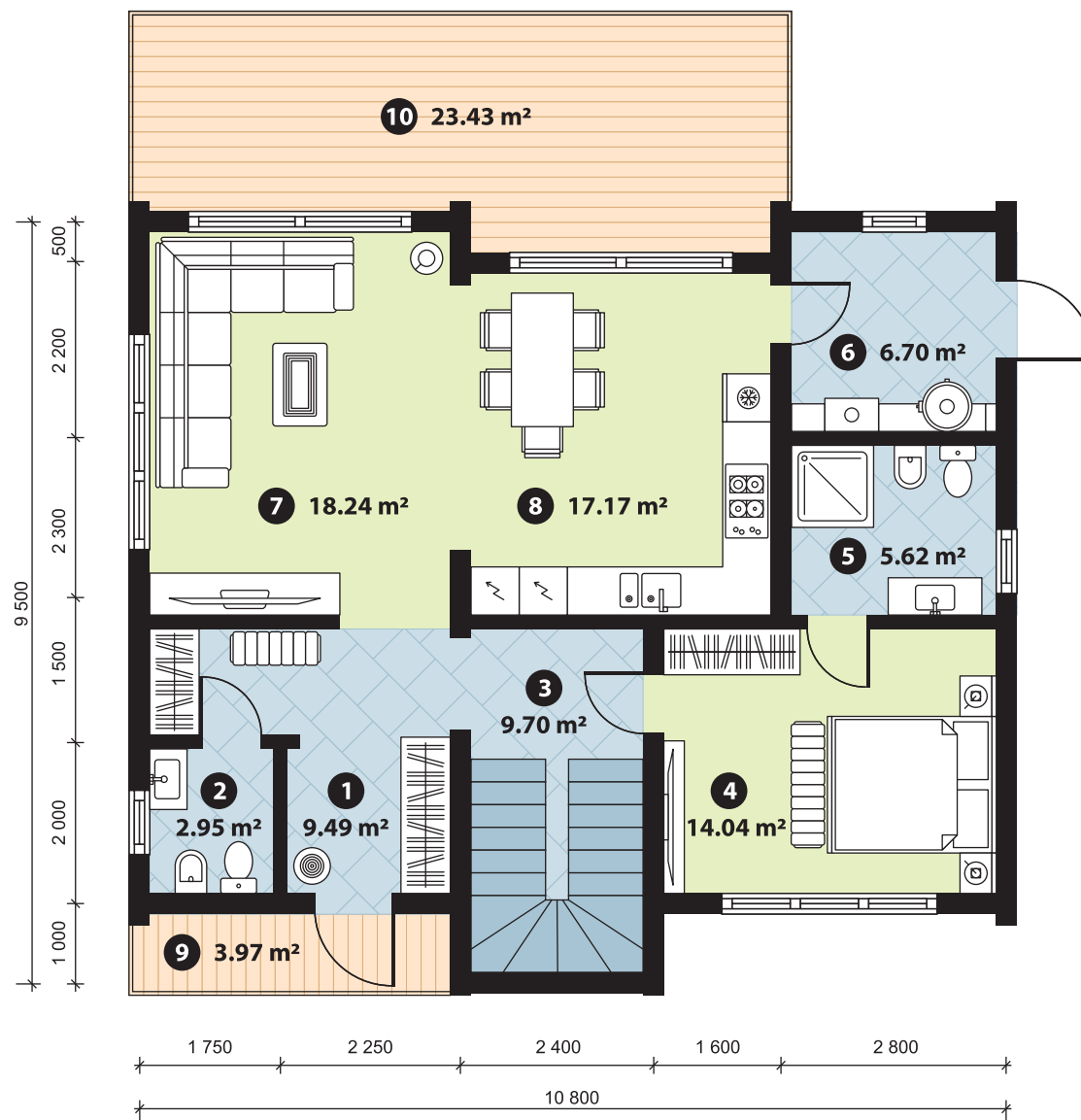
Leonardo 161 m² + 41 m² outdoor spaces



Leonardo 161 m² + 41 m² outdoor spaces

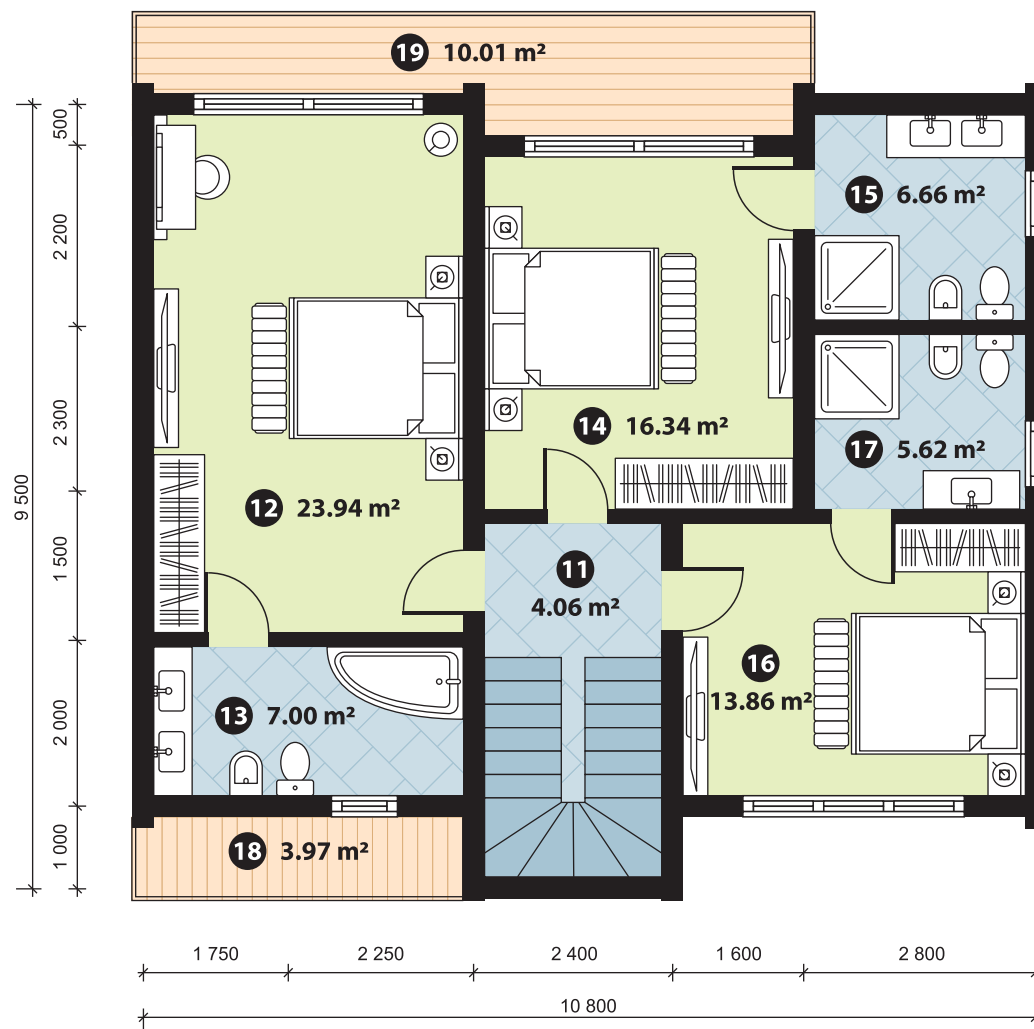


Leonardo 161 m² + 41 m² outdoor spaces



First floor plan		
No.	Zone name	Area, m ²
1	Entrance hall	9.49
2	Powder room	2.95
3	Corridor	9.70
4	Bedroom	14.04
5	Bathroom	5.62
6	Boiler room	6.70
7	Living room	18.24
8	Dining room	17.17
9	Porch	3.97
10	Terrace	23.43
Total area		111.31
Living area within the heated contour		83.91

Leonardo 161 m² + 41 m² outdoor spaces



Second floor plan		
No.	Zone name	Area, m ²
11	Corridor	4.06
12	Bedroom	23.94
13	Bathroom	7.00
14	Bedroom	16.34
15	Bathroom	6.66
16	Bedroom	13.86
17	Bathroom	5.62
18	Balcony	3.97
19	Balcony	10.01
Total area		91.46
Living area within the heated contour		77.48

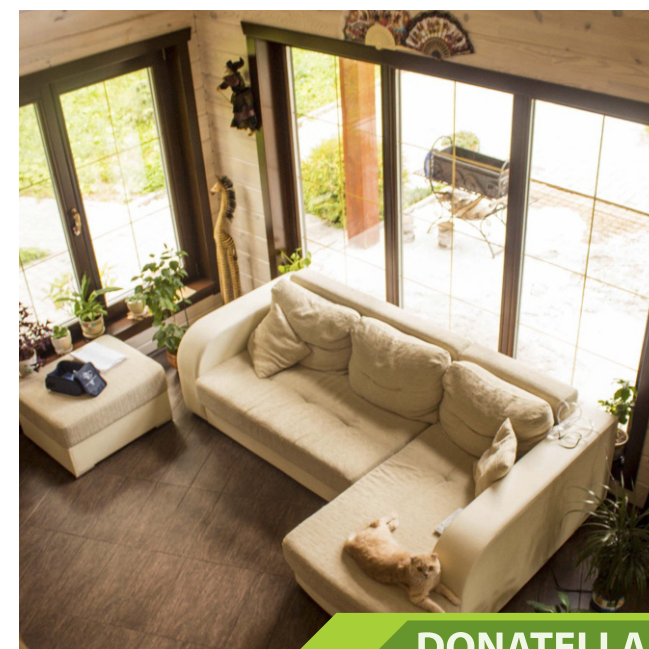
Leonardo 161 m² + 41 m² outdoor spaces



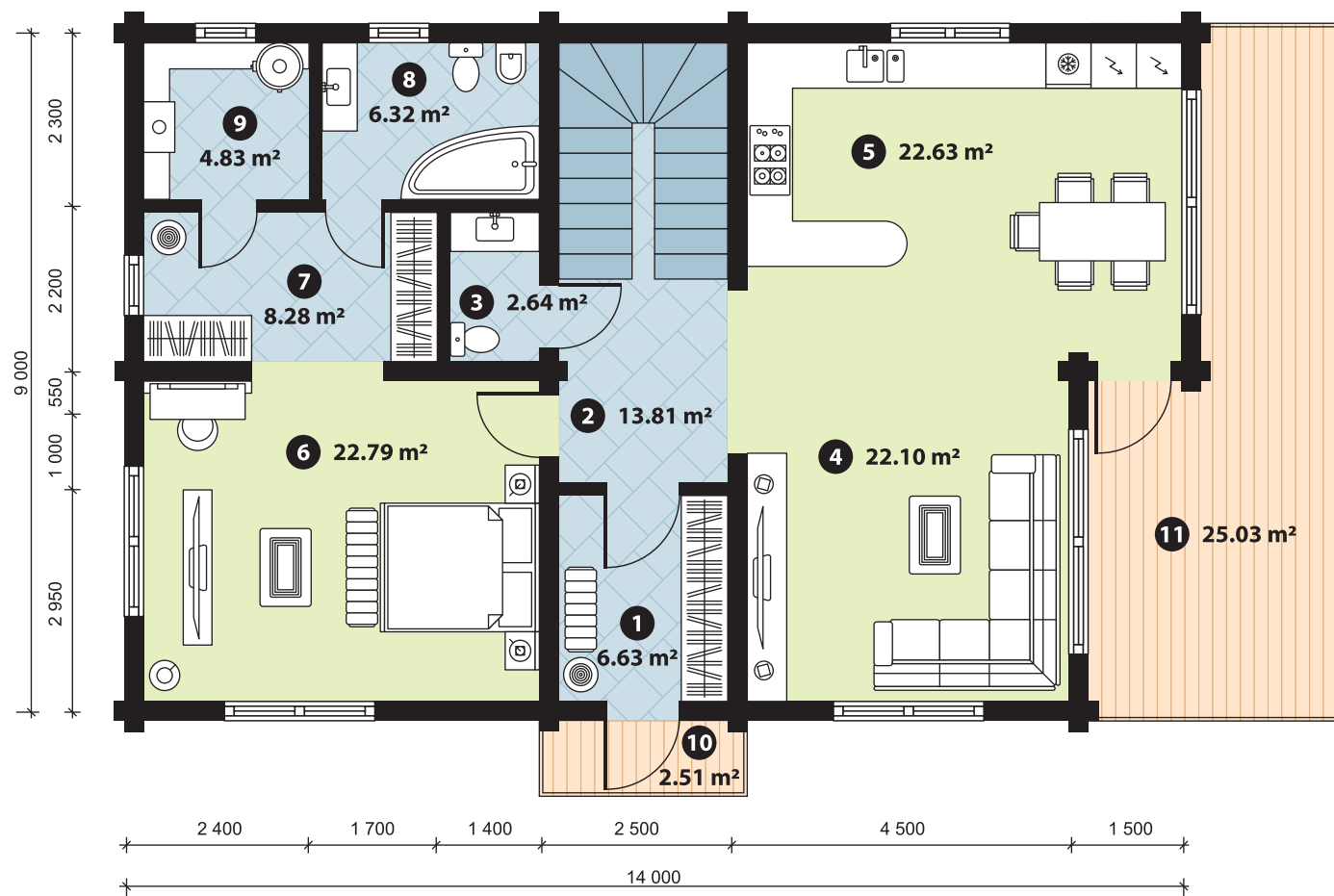
Donatella 169 m² + 35 m² outdoor spaces



Donatella 169 m² + 35 m² outdoor spaces

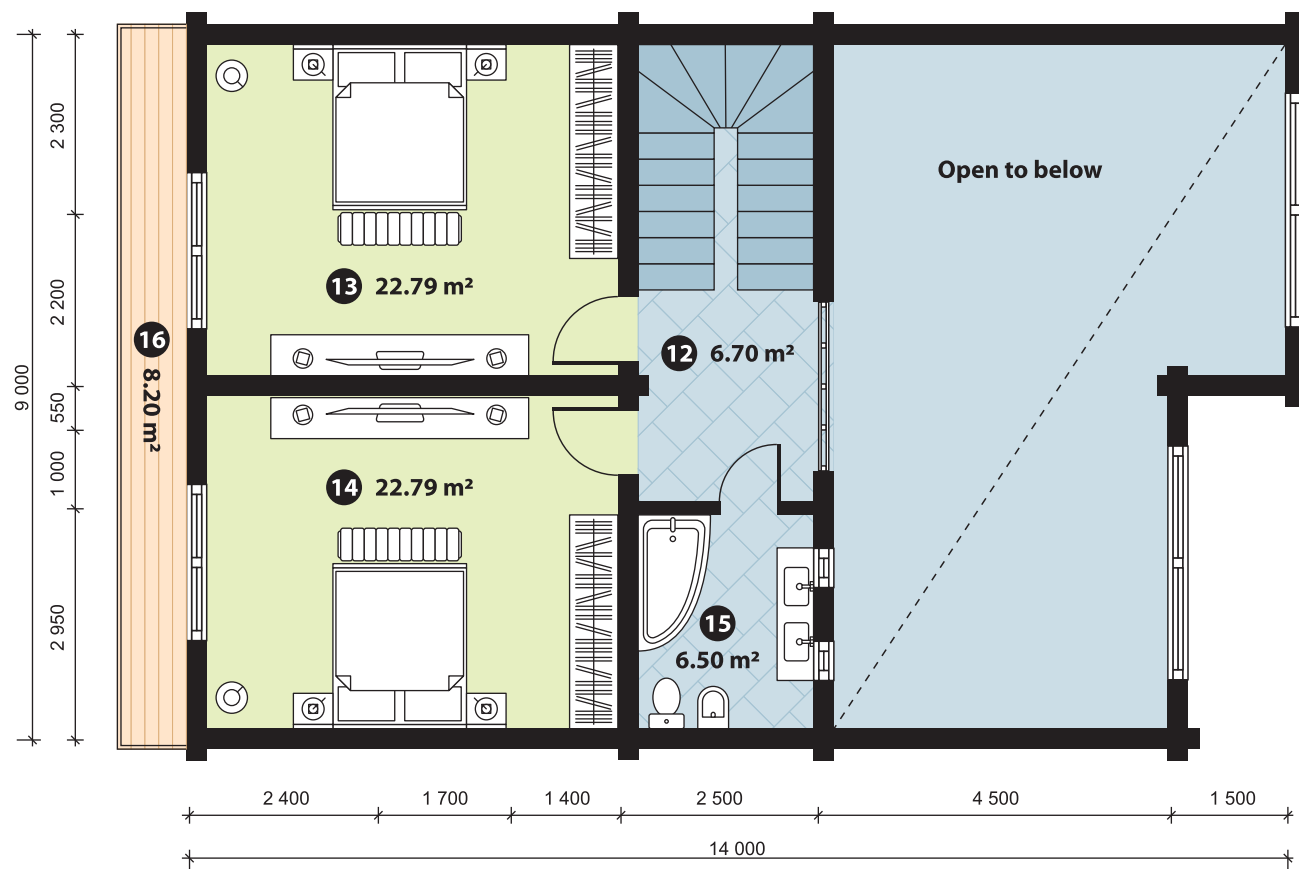


Donatella 169 m² + 35 m² outdoor spaces



First floor plan		
No.	Zone name	Area, m ²
1	Entrance hall	6.63
2	Corridor	13.81
3	Powder room	2.64
4	Living room	22.10
5	Dining room	22.63
6	Bedroom	22.79
7	Walk-in closet	8.28
8	Bathroom	6.32
9	Boiler room	4.83
10	Porch	2.51
11	Terrace	25.03
Total area		137.57
Living area within the heated contour		110.03

Donatella 169 m² + 35 m² outdoor spaces

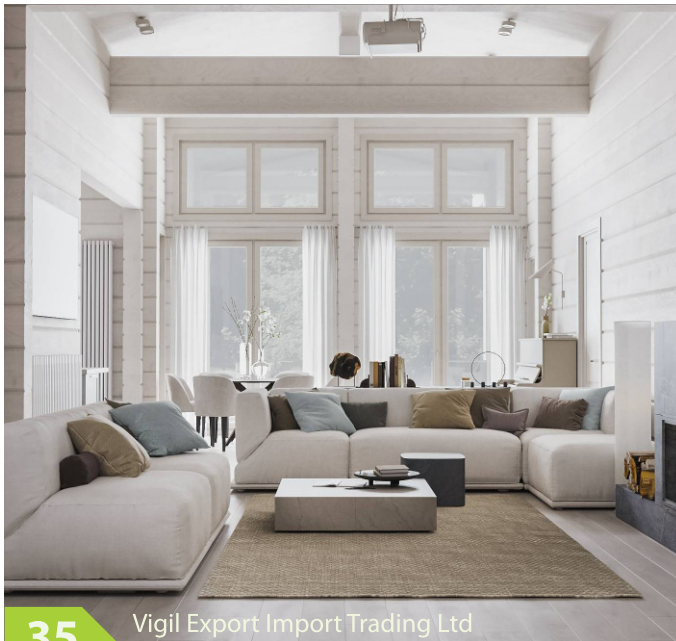


Second floor plan		
No.	Zone name	Area, m ²
12	Corridor	6.70
13	Bedroom	22.79
14	Bedroom	22.79
15	Bathroom	6.50
16	Balcony	8.20
Total area		66.98
Living area within the heated contour		58.78

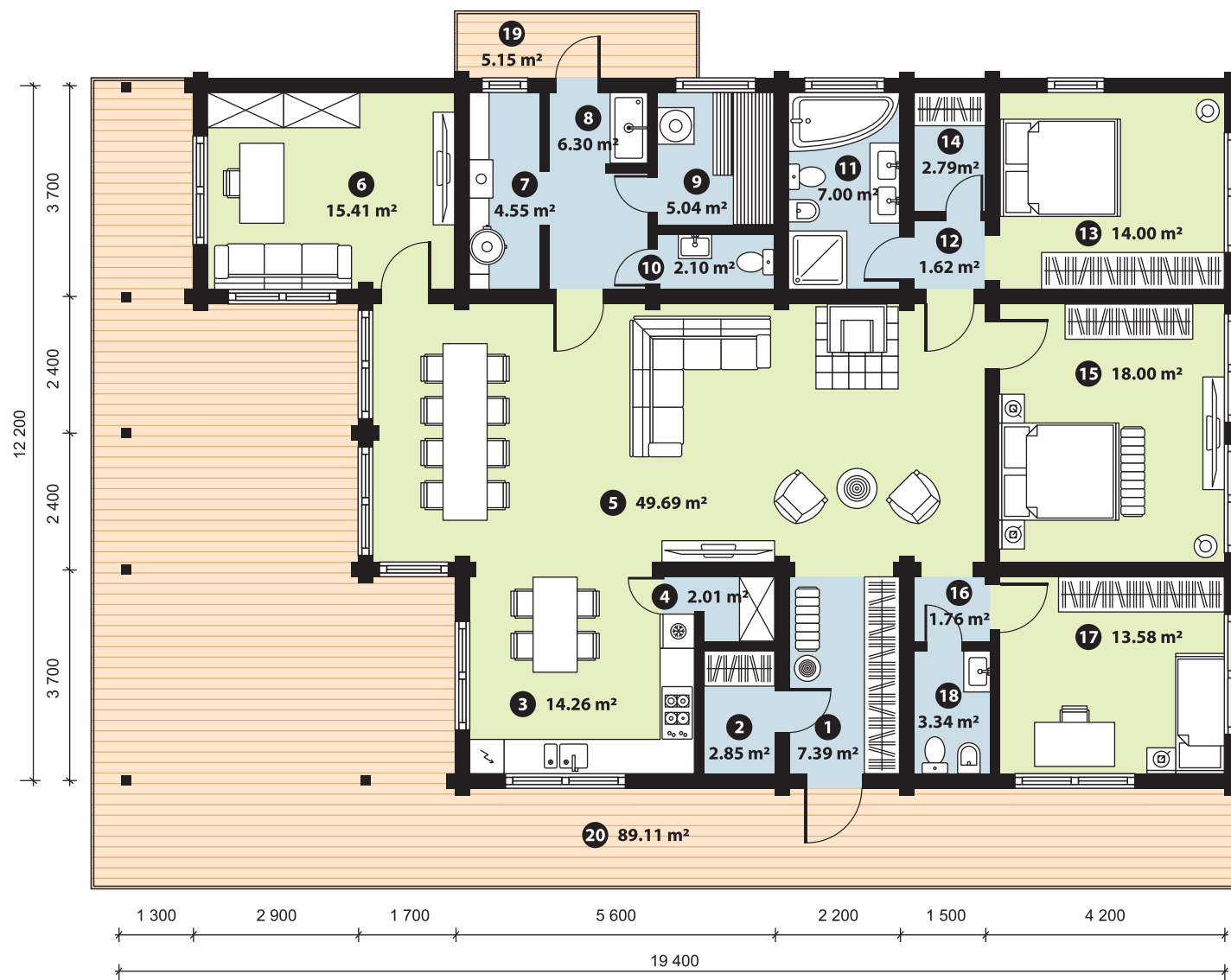
Santorini 172 m² + 94 m² outdoor spaces



Santorini 172 m² + 94 m² outdoor spaces



Santorini 172 m² + 94 m² outdoor spaces



First floor plan		
No.	Zone name	Area, m ²
1	Entrance hall	7.39
2	Walk-in closet	2.85
3	Kitchen	14.26
4	Pantry	2.01
5	Living and dining room	49.69
6	Home office	15.41
7	Boiler room	4.55
8	Shower room	6.30
9	Sauna	5.04
10	Toilet room	2.10
11	Bathroom	7.00
12	Corridor	1.62
13	Bedroom	14.00
14	Walk-in closet	2.79
15	Bedroom	18.00
16	Corridor	1.76
17	Bedroom	13.58
18	Bathroom	3.34
19	Porch	5.15
20	Terrace	89.11
Total area		265.95
Living area within the heated contour		171.69

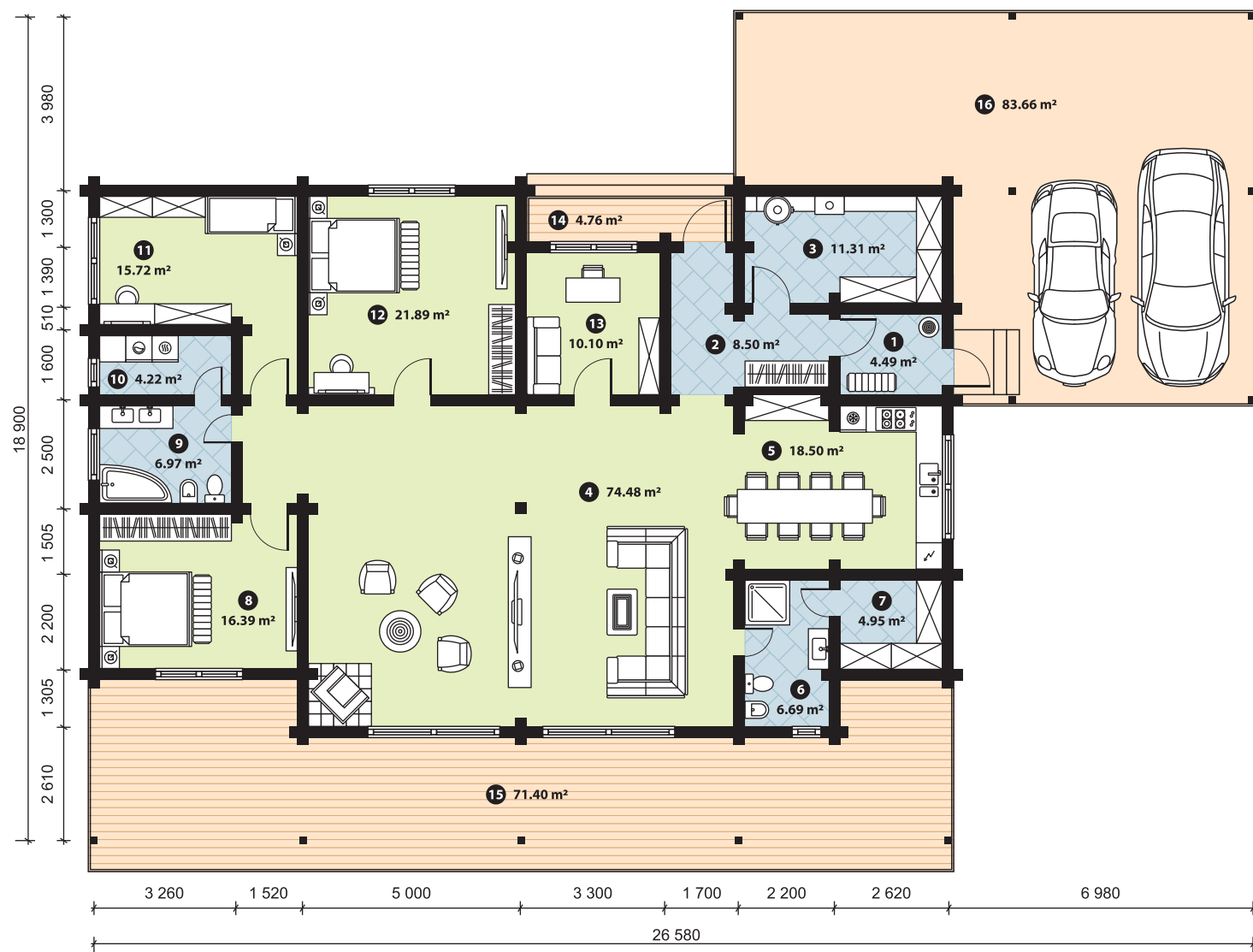
Olimpia 204 m² + 160 m² outdoor spaces



Olimpia 204 m² + 160 m² outdoor spaces



Olimpia 204 m² + 160 m² outdoor spaces



First floor plan		
No.	Zone name	Area, m ²
1	Entrance hall	4.49
2	Corridor	8.50
3	Boiler room	11.31
4	Living room	74.48
5	Kitchen and dining room	18.50
6	Bathroom	6.69
7	Pantry	4.95
8	Bedroom	16.39
9	Bathroom	6.97
10	Laundry room	4.22
11	Bedroom	15.72
12	Bedroom	21.89
13	Home office	10.10
14	Porch	4.76
15	Terrace	71.40
16	Carport	83.66
Total area		364.03
Living area within the heated contour		204.21

Victoria 215 m² + 60 m² outdoor spaces



Victoria 215 m² + 60 m² outdoor spaces

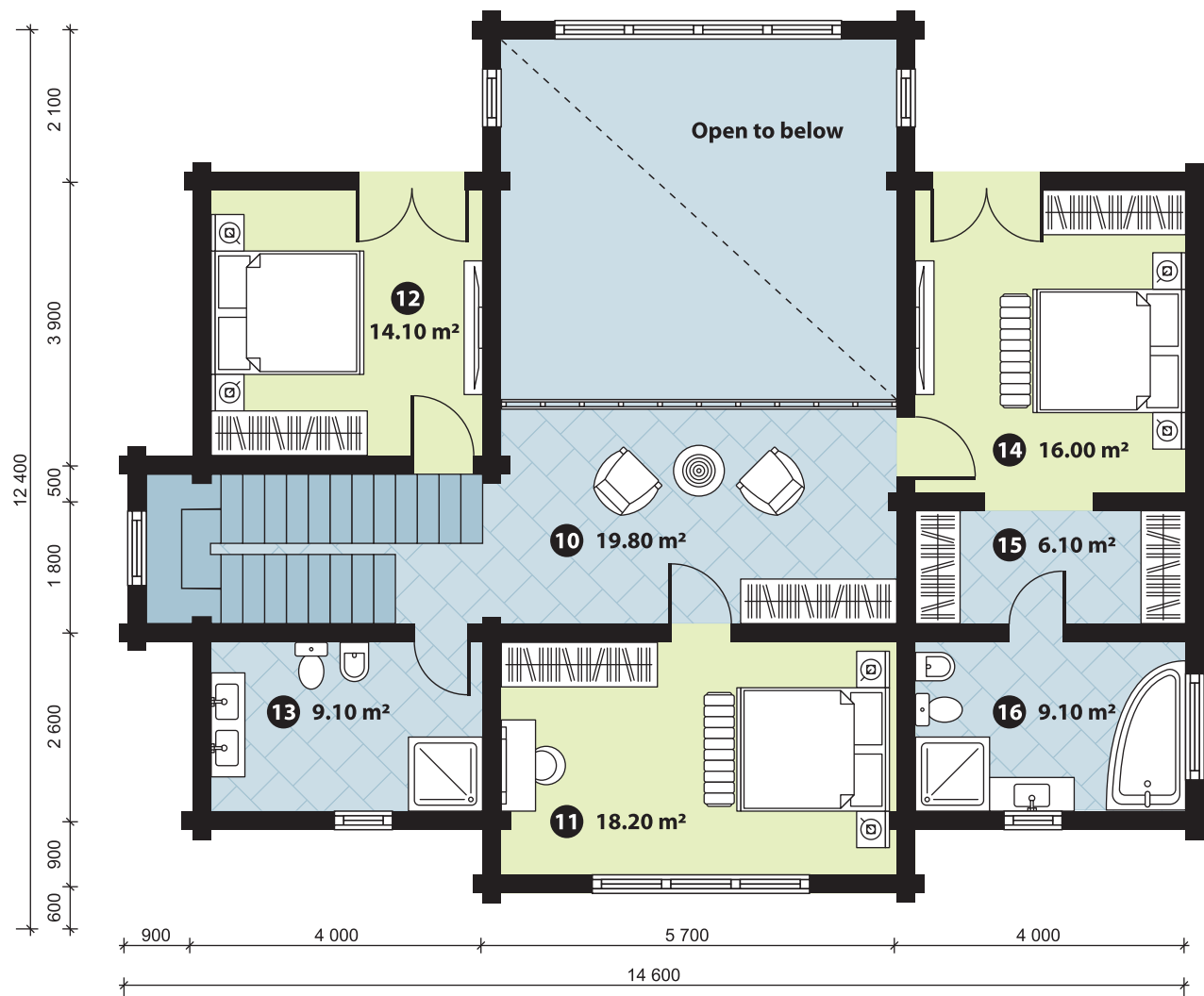


Victoria 215 m² + 60 m² outdoor spaces



First floor plan		
No.	Zone name	Area, m ²
1	Entrance hall	13.20
2	Bathroom	9.10
3	Staircase	9.90
4	Boiler and laundry room	15.90
5	Bedroom	16.00
6	Living and dining room	44.50
7	Kitchen	14.10
8	Porch	8.00
9	Terrace	52.20
Total area		182.90
Living area within the heated contour		122.70

Victoria 215 m² + 60 m² outdoor spaces



Second floor plan		
No.	Zone name	Area, m ²
10	Hall	19.80
11	Bedroom	18.20
12	Bedroom	14.10
13	Bathroom	9.10
14	Bedroom	16.00
15	Walk-in closet	6.10
16	Bathroom	9.10
Total area		92.40
Living area within the heated contour		92.40

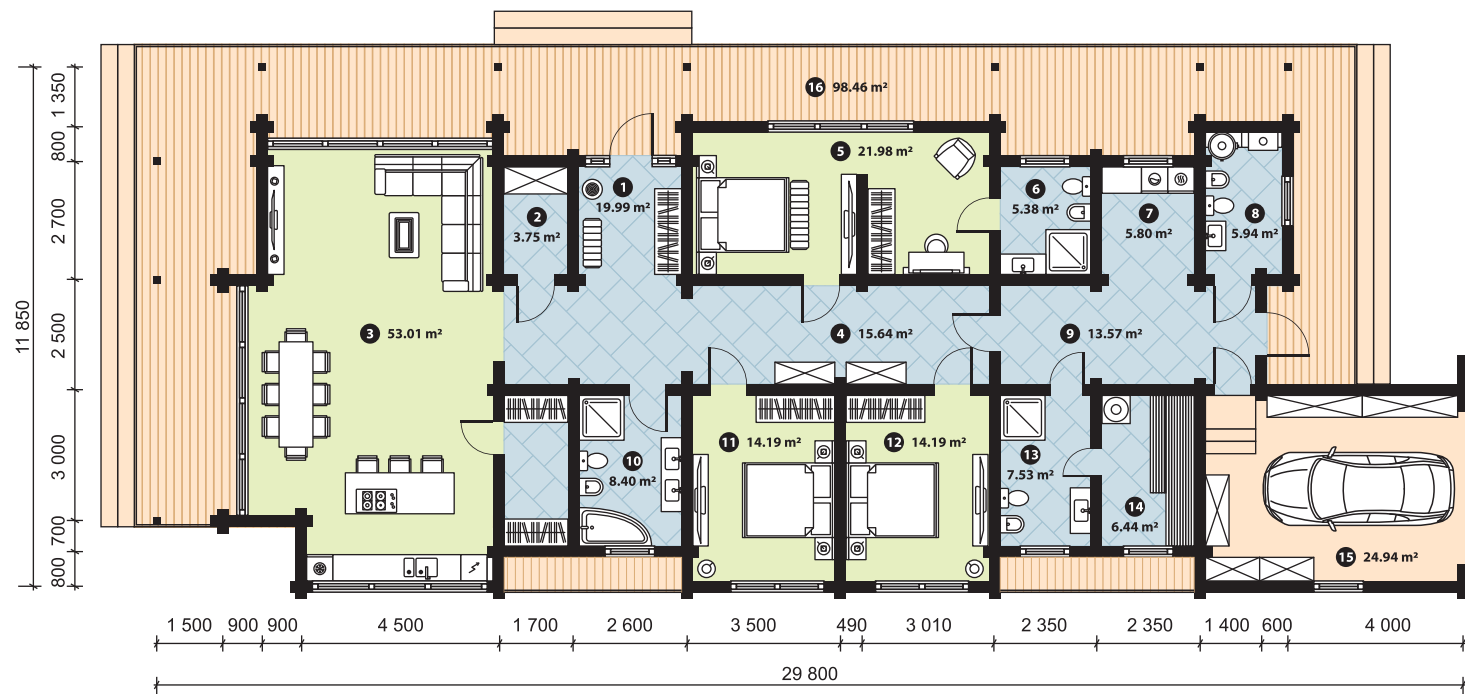
Renaissance 221 m² + 98 m² outdoor spaces



Renaissance 221 m² + 98 m² outdoor spaces

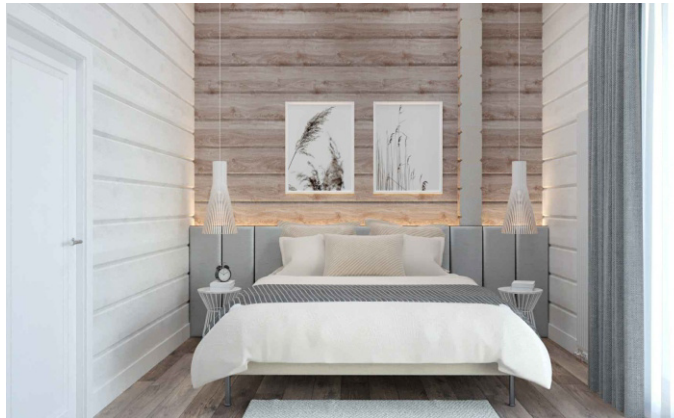


Renaissance 221 m² + 98 m² outdoor spaces

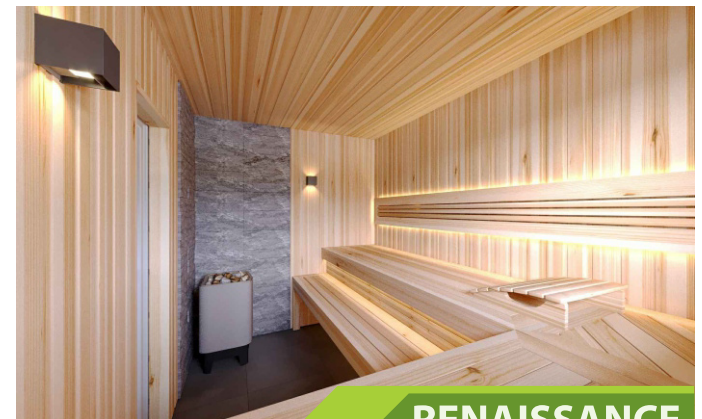
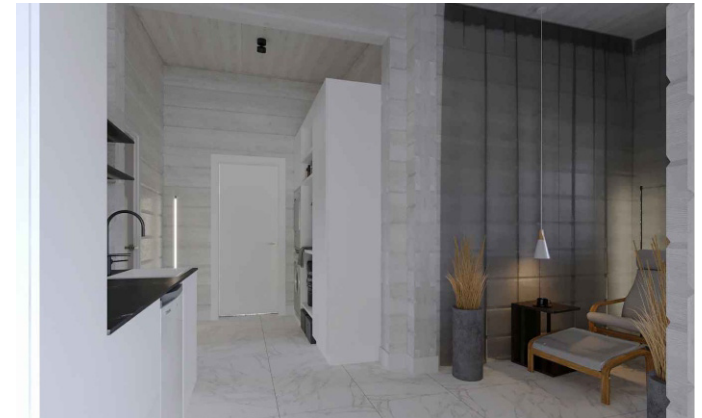
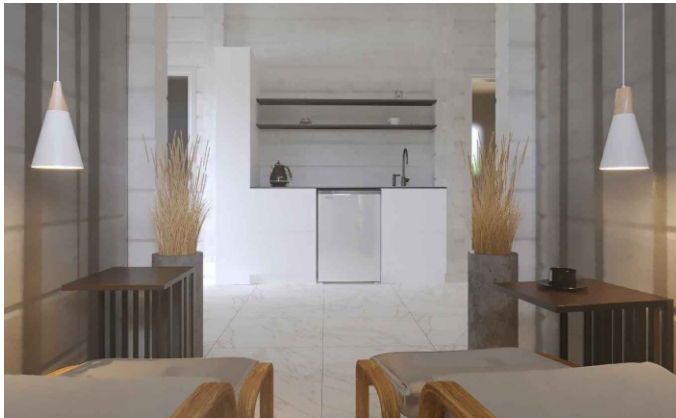


First floor plan		
No.	Zone name	Area, m ²
1	Entrance hall	19.99
2	Pantry	3.75
3	Living and dining room	53.01
4	Corridor	15.64
5	Bedroom	21.98
6	Bathroom	5.38
7	Laundry room	5.80
8	Boiler and toilet room	5.94
9	Corridor	13.57
10	Bathroom	8.40
11	Bedroom	14.19
12	Bedroom	14.19
13	Shower room	7.53
14	Sauna	6.44
15	Garage and workshop room	24.94
16	Terrace	98.46
Total area		319.21
Living area within the heated contour		220.75

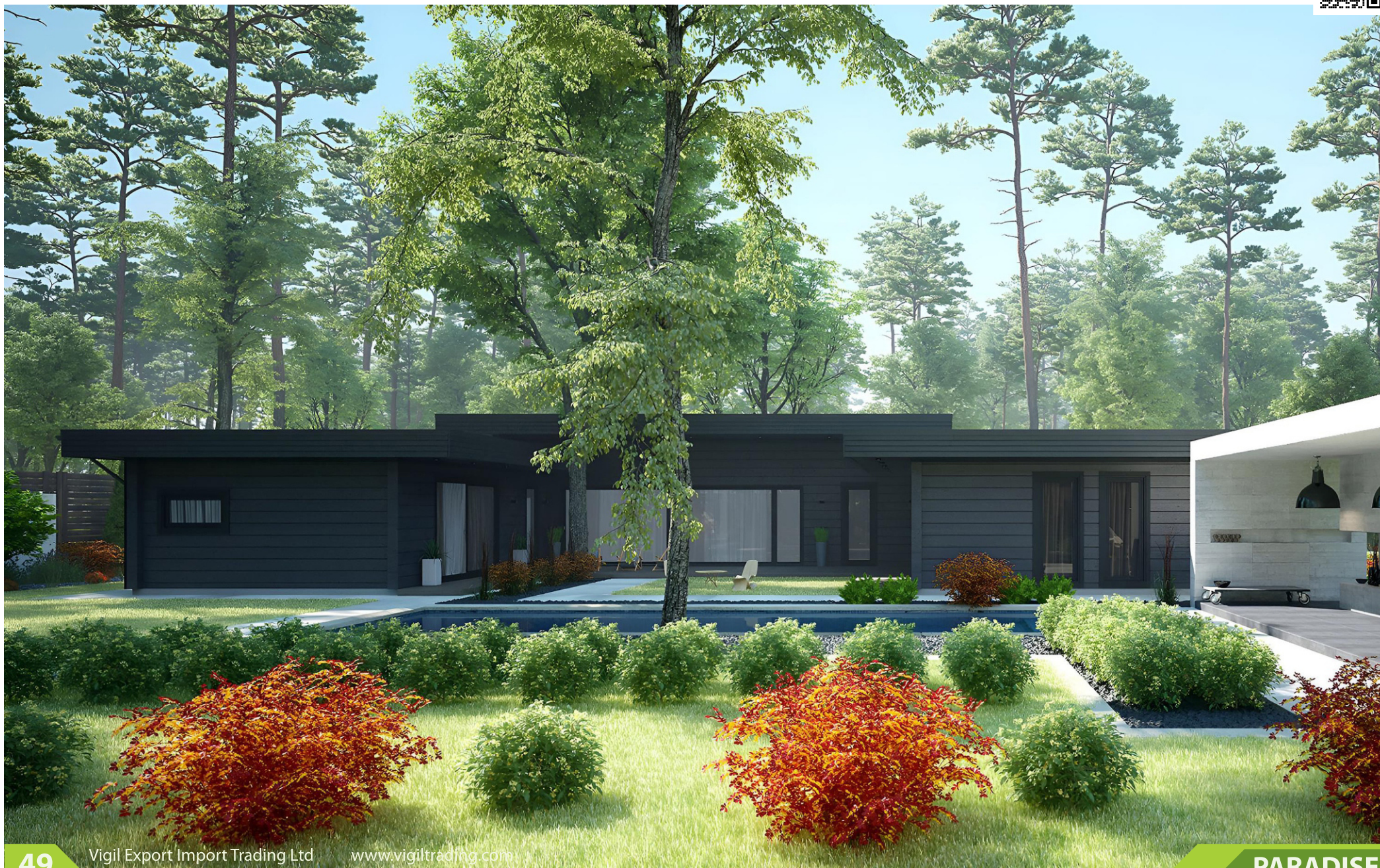
Renaissance 221 m² + 98 m² outdoor spaces



Renaissance 221 m² + 98 m² outdoor spaces



Paradise 245 m² + 67 m² outdoor spaces



Paradise 245 m² + 67 m² outdoor spaces



Paradise 245 m² + 67 m² outdoor spaces



First floor plan		
No.	Zone name	Area, m ²
1	Entrance hall	13.50
2	Boiler and laundry room	8.82
3	Living and dining room	38.10
4	Kitchen	30.41
5	Home office	18.72
6	Corridor	13.92
7	Bathroom	9.24
8	Bedroom	17.31
9	Walk-in closet	8.60
10	Bedroom	15.19
11	Walk-in closet	7.33
12	Bedroom	15.19
13	Walk-in closet	6.12
14	Corridor	3.72
15	Toilet room	2.88
16	Shower room	5.88
17	Sauna	7.25
18	Recreation room	22.39
19	Terrace	67.55
Total area		312.12
Living area within the heated contour		244.57

Cassandra 263 m² + 38 m² outdoor spaces



Cassandra 263 m² + 38 m² outdoor spaces



Cassandra 263 m² + 38 m² outdoor spaces



First floor plan		
No.	Zone name	Area, m ²
1	Entrance hall	20.11
2	Powder room	5.94
3	Living and dining room	76.84
4	Boiler and laundry room	10.84
5	Corridor	30.59
6	Bedroom	17.49
7	Bedroom	20.90
8	Bathroom	5.75
9	Bedroom	20.90
10	Bathroom	5.75
11	Bedroom	23.04
12	Walk-in closet	11.04
13	Bathroom	13.44
14	Porch	11.90
15	Terrace	26.60
Total area		301.13
Living area within the heated contour		262.63

Versalles 303 m² + 7 m² outdoor spaces



Versalles 303 m² + 7 m² outdoor spaces

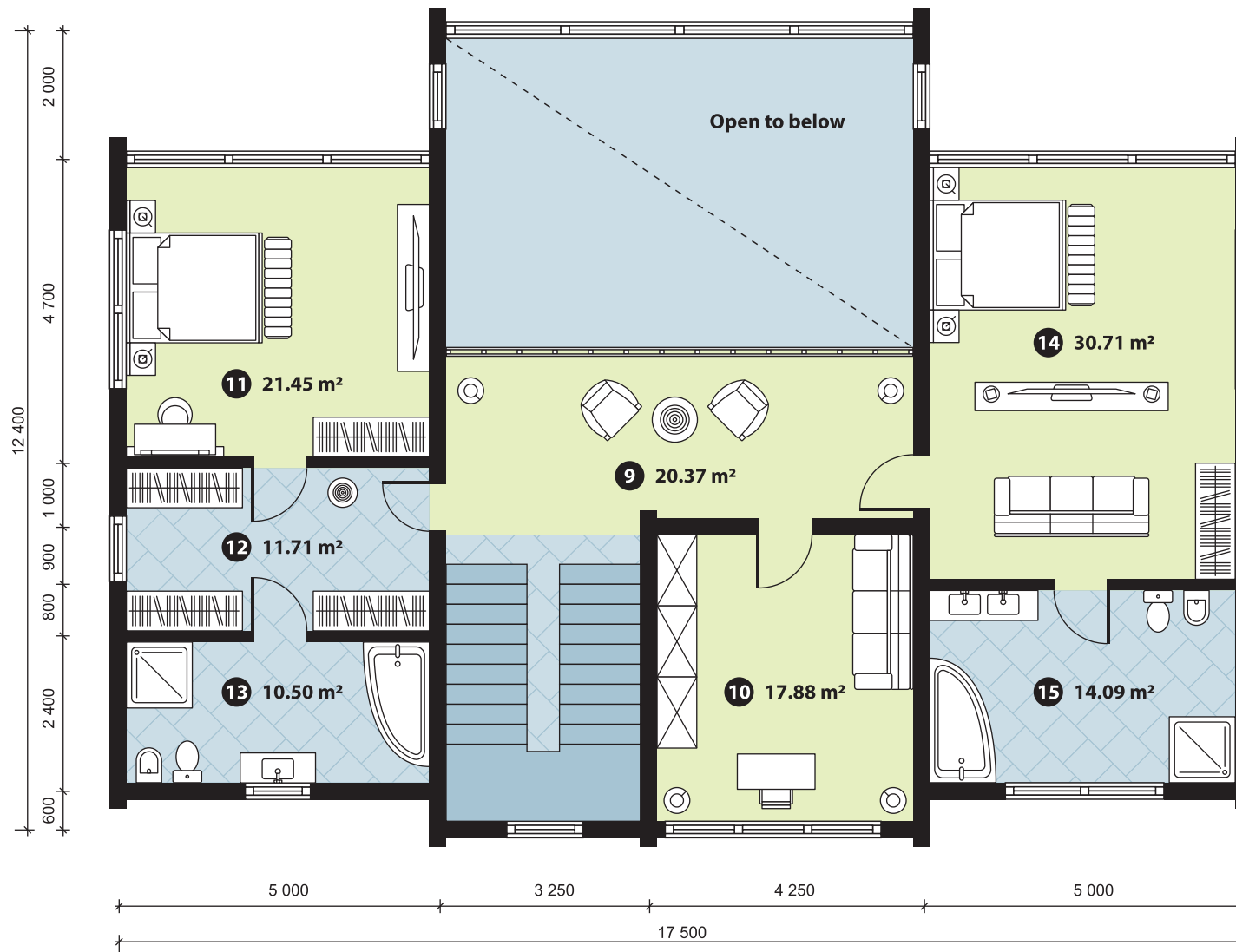


Versalles 303 m² + 7 m² outdoor spaces



First floor plan		
No.	Zone name	Area, m ²
1	Entrance hall	18.15
2	Living room	68.76
3	Dining room	31.33
4	Boiler and laundry room	14.09
5	Bedroom	21.45
6	Walk-in closet	11.71
7	Bathroom	10.50
8	Porch	7.49
Total area		183.48
Living area within the heated contour		175.99

Versalles 303 m² + 7 m² outdoor spaces



Second floor plan		
No.	Zone name	Area, m ²
9	Hall	20.37
10	Home office	17.88
11	Bedroom	21.45
12	Walk-in closet	11.71
13	Bathroom	10.50
14	Bedroom	30.71
15	Bathroom	14.09
Total area		126.71
Living area within the heated contour		126.71

Versalles 303 m² + 7 m² outdoor spaces



Eco Palace 366 m² + 69 m² outdoor spaces



Eco Palace 366 m² + 69 m² outdoor spaces



Eco Palace 366 m² + 69 m² outdoor spaces

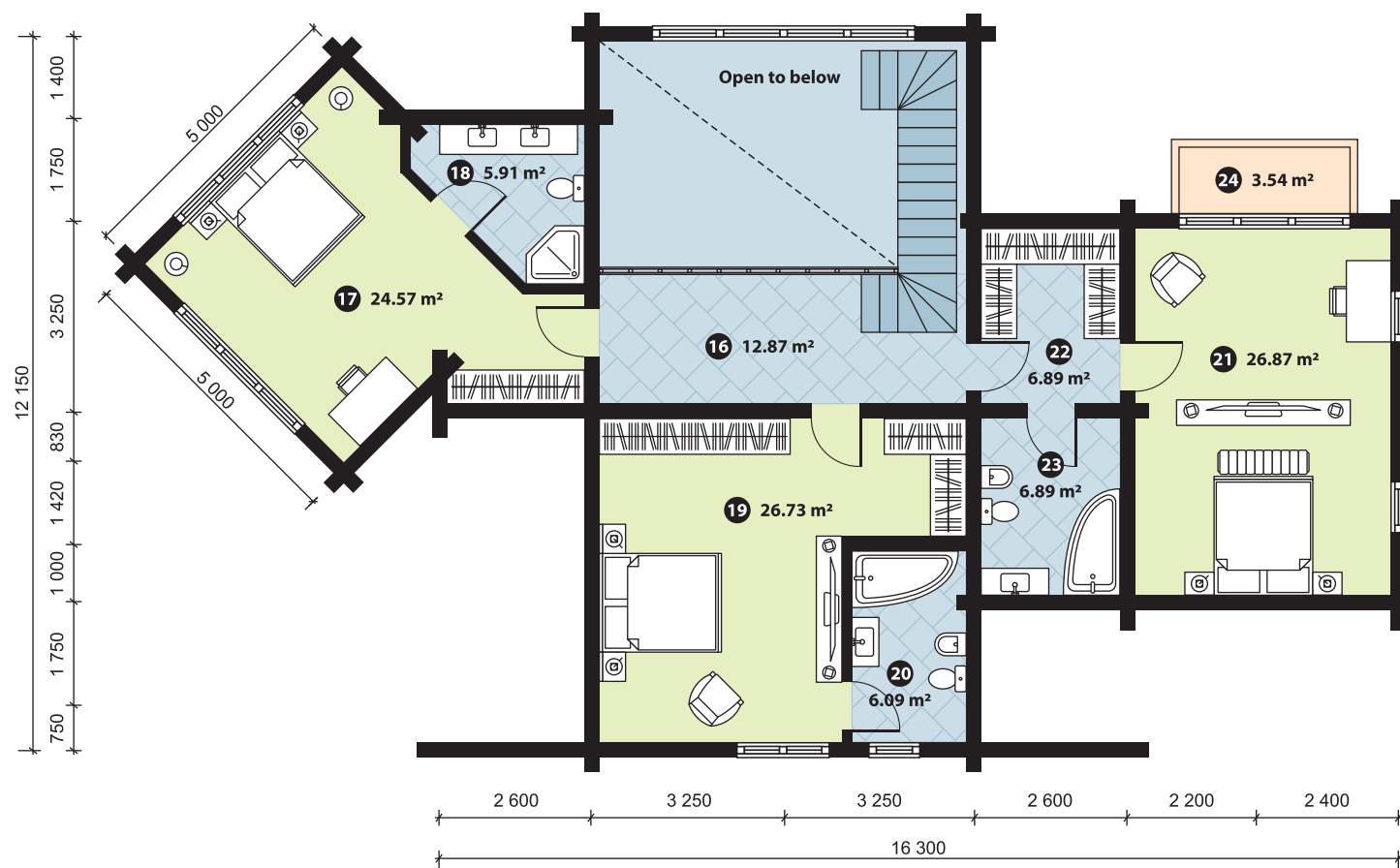


Eco Palace 366 m² + 69 m² outdoor spaces



First floor plan		
No.	Zone name	Area, m ²
1	Entrance hall	9.56
2	Boiler room	12.68
3	Walk-in closet	9.56
4	Kitchen and dining room	32.36
5	Living room	51.97
6	Laundry room	19.32
7	Corridor	3.76
8	Bathroom	4.78
9	Guest bedroom	16.42
10	Bathroom	4.54
11	Corridor	3.12
12	Garage	63.37
13	Loggia	17.77
14	Porch	7.15
15	Terrace	58.60
Total area		314.96
Living area within the heated contour		249.21

Eco Palace 366 m² + 69 m² outdoor spaces



Second floor plan		
No.	Zone name	Area, m ²
16	Hall	12.87
17	Bedroom	24.57
18	Bathroom	5.91
19	Bedroom	26.73
20	Bathroom	6.09
21	Bedroom	26.87
22	Walk-in closet	6.89
23	Bathroom	6.89
24	Balcony	3.54
Total area		120.36
Living area within the heated contour		116.82



Vigil Export Import Trading Ltd

18 D2, block A, Cagdas Str., Darussafaka

Sariyer, Istanbul, 34457 Turkey

Tel: +90 544 195 90 90  

e-mail: info@vigiltrading.com

www.vigiltrading.com

